

Animals Including Humans

Biology

Year 1

Teacher copy of the date of objective and activities covered in teacher science booklet

National curriculum objective

- Identify, name, draw and label the basic parts of the human body and say which part is associated with which sense

Key Vocabulary (topic words must be spelt correctly throughout topic)

leg	arm	elbow	head
hand	ear	nose	back
senses	see	hear	touch
smell	taste	mouth	loud
quiet	strong	mild	glasses

Substantive - Subject Knowledge Bigger Picture - Support words

Glossary of key terms you want to remember

Senses

Things that help the brain better understand the world around us

Learning Intent Questions

PA

TA

What are the basic parts of the human body and can I identify, name and label them?

Which parts of the human body are associated with senses?

FIVE SENSES



HEARING



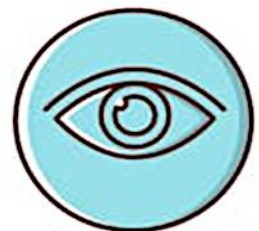
SMELL



TASTE



TOUCH



VISION